

61.03.16.04 N  
149.44.40.81 W  
Surveyor, Stacy Hirsack

### POTTER CREEK TRACT 3

2640 x 1320

EAST, BLM 2640.00  
TRACT 3  
(5 1/2, SW 1/4, SEC 12)

80.00 ACRES

61.03.16.03 N  
149.43.46.85 W  
Surveyor, Stacy Hirsack

NORTH BLM 1320.00

POTTER CREEK TR3 (UNSUBDIVIDED)

EAST, BLM 2640.00

POTTER CREEK TRACT 1  
(PLAT 71-202)

MONUMENT  
61.03.07.10 N  
149.43.46.85 W  
Surveyor, Stacy Hirsack

MONUMENT  
61.03.03.04 N  
149.44.40.18 W  
Surveyor, Stacy Hirsack



1640'

1095'

EAST 1320.00

D DRIVEWAY EASEMENT

#### LEGEND

- 1/2" REBAR SET
- ✱ MONUMENT RECOVERED (GLD)
- ⊕ DRIVEWAY EASEMENT (RECORDED)

PLOT PLAN	
SOCIAL ARCHITECTS AND ECONOMISTS INTERNATIONAL, LLC 907-444-7723	
DATE	9/21/2014



61.03.16.04 N  
149.44.40.11 W  
Surveyor, Stacy H. Black

POTTER CREEK TRACT 3

2640 x 1,320

EAST, BLM 2640.00  
TRACT 3  
(6 1/2 SW 1/4, SEC 12)

80.00 ACRES

61.03.16.03 N  
149.43.46.35 W  
Surveyor, Stacy H. Black

EAST, BLM 1320.00

POTTER CREEK TR3 (UNSUBDIVIDED)

EAST, BLM 2640.00

POTTER CREEK TRACT 3  
(PLAT 71-202)

MONUMENT  
61.03.03.10 N  
149.43.46.35 W  
Surveyor, Stacy H. Black

MONUMENT  
62.03.03.04 N  
149.44.40.13 W  
Surveyor, Stacy H. Black



2640.00

1320.00

EAST 1320.00

D DRIVEWAY EASEMENT

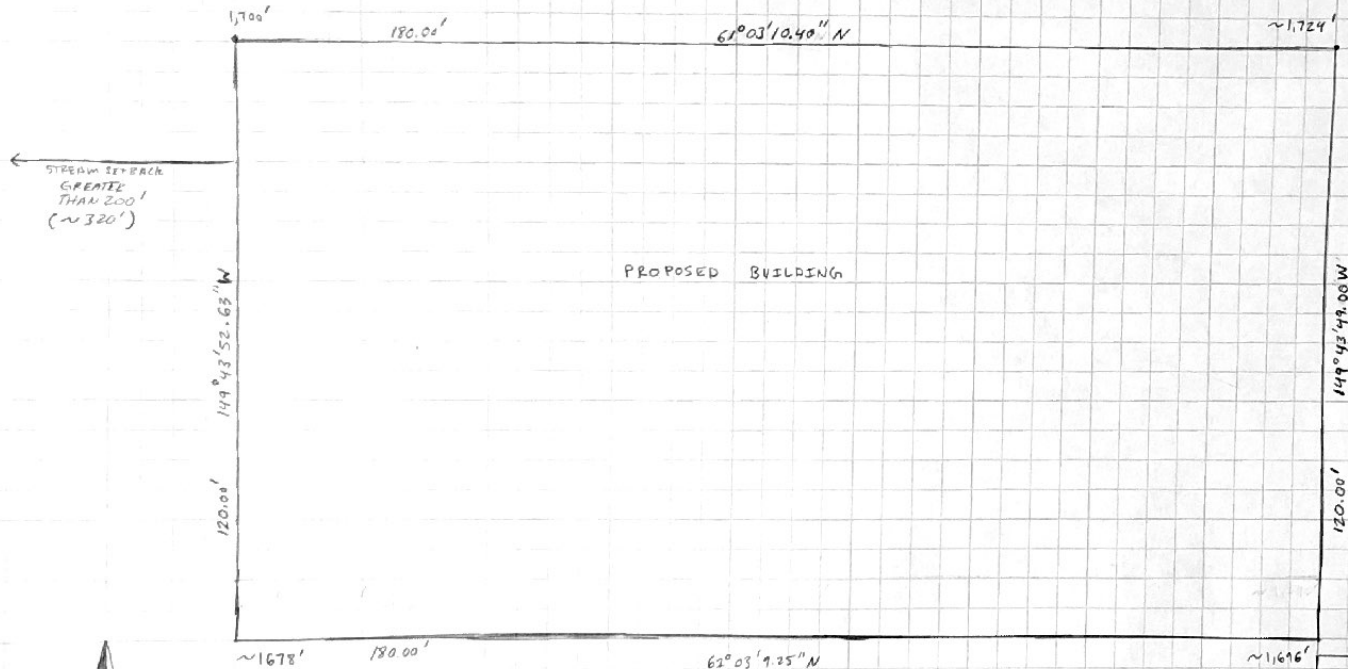
LEGEND

- 1/2" REFERENCE SET
- ✱ MONUMENT RECOVERED (G.L.D)
- E DRIVEWAY EASEMENT (RECORDED)

PLOT PLAN	
SOCIAL ARCHITECTS AND ECONOMISTS INTERNATIONAL, LLC 907-644-7728	
DATE	
	9/21/2014



POTTER CREEK TRACT 3, LOT 1



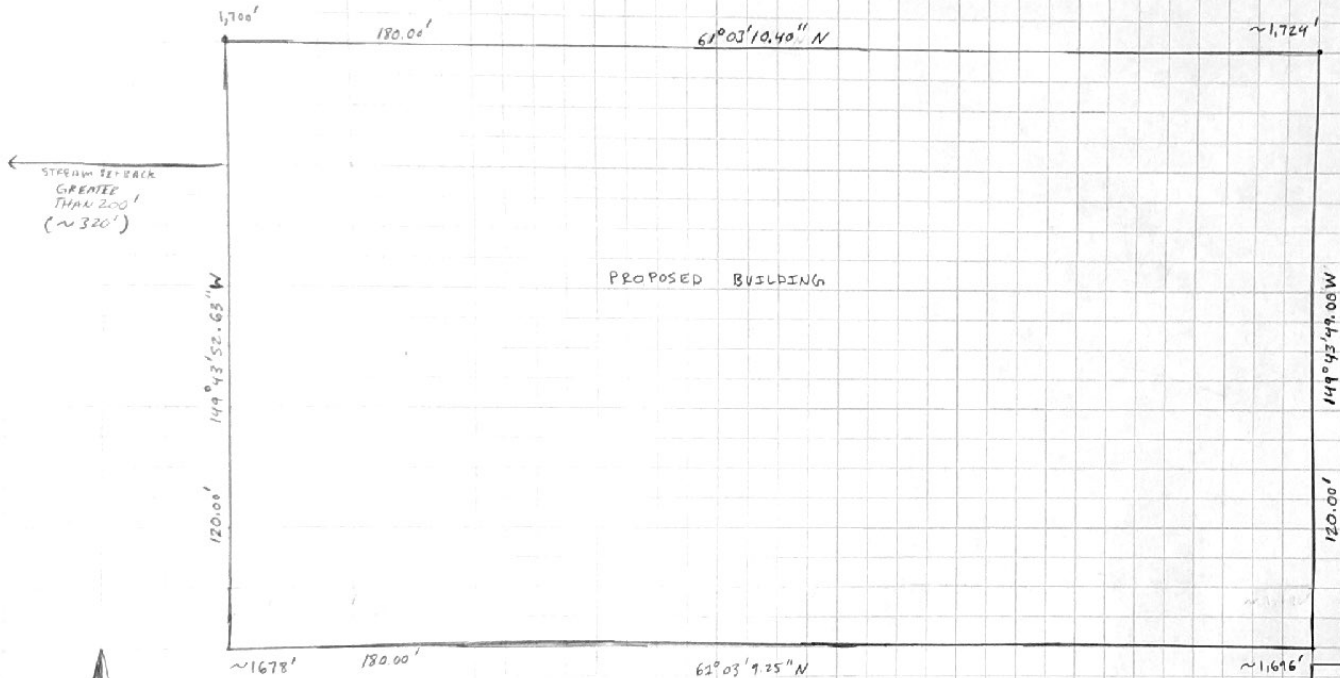
PROPOSED BUILDING

PLOT PLAN

SOCIAL ARCHITECTS AND ECONOMISTS INTERNATIONAL, LLC  
CHRISTOPHER MATTHEW CAVANAGH, 907-444-7728  
PO BOX 112057, ANCHORAGE AK 99511-2057  
DATED 9/23/2019



POTTER CREEK TRACT 3, LOT 1



PLOT PLAN

SOCIAL ARCHITECTS AND ECODRUMISTS INTERNATIONAL, LLC  
CHRISTOPHER MATTHEW CAVANAUGH, 907-444-7728  
PO BOX 112057, ANCHORAGE AK 99511-2057  
DATED 9/23/2019

